

FIOSRACHADH CEART AGUS CEÀRR

CORRECT AND INCORRECT INFORMATION

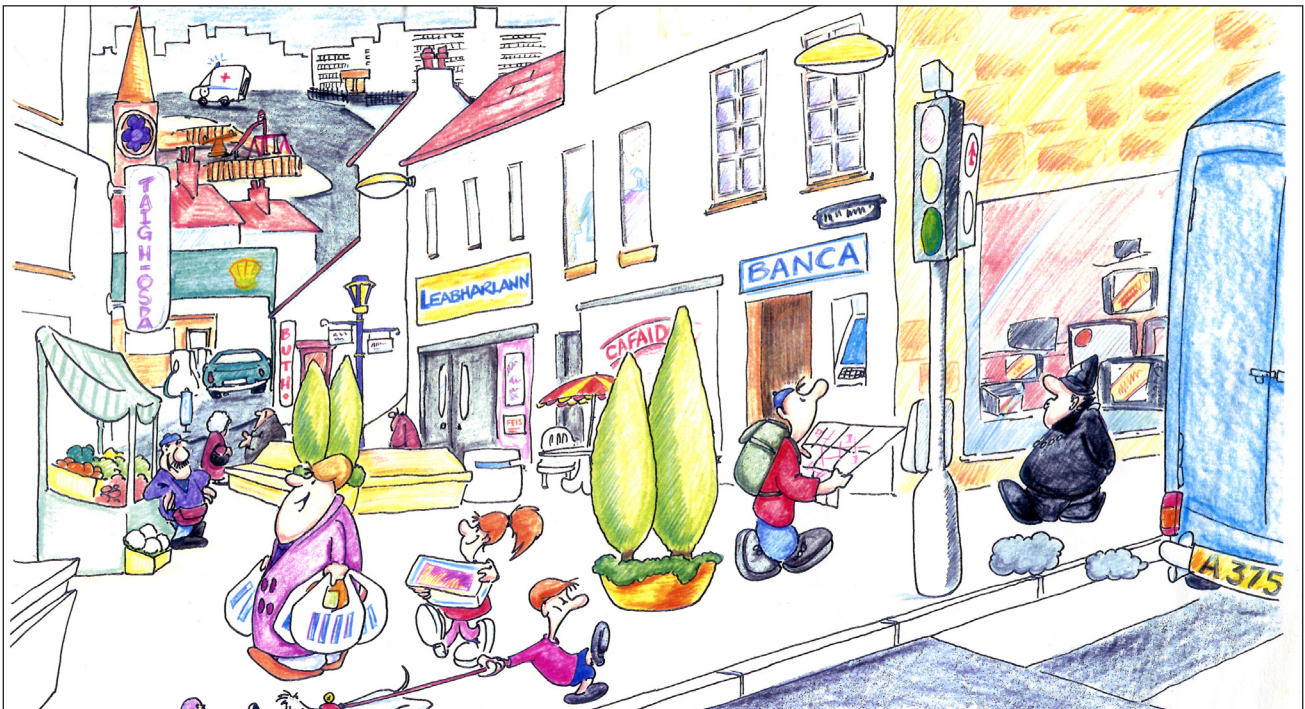
Dèan sgrùdadh air an dealbh de mheadhan baile. Leugh na seantansan a leanas: tha cuid dhiubh ceart agus cuid eile ceàrr. Cuir striochag ris an fheadhainn a tha ceart agus ceartaich an fheadhainn a tha ceàrr.

Study the illustration of a town centre. Read the following sentences: some are right and some wrong. Tick the ones which are right and correct the ones which are wrong.

1. Tha pàirce chloinne air cùlaibh na h-eaglaise.
2. Tha carbad-eiridinn air an rathad air cùlaibh an ospadail.
3. Tha am biona-sgudail air beulaibh a' chafaidh.
4. Chan eil taigh-tasgaidh mu choinneimh na leabharlainn.
5. Faodaidh càraichean pairceadh air beulaibh na leabharlainn.
6. Tha bùth os cionn a' chafaidh.
7. Tha na solais sràide os cionn an taigh-òsta.
8. Tha fear le stàile glasraich mu choinneimh a' chafaidh.
9. Chì thu càr na stad air beulaibh na garaids.
10. Tha am poileas air cùlaibh bùth nan telebhisean.

biona-sgudail – rubbish bin

stàile – stall



air cùlaibh

Fadair-theangachadh: 1. There's a children's park behind the church. 2. There's an ambulance on the road behind the hospital. 3. The rubbish bin is in front of the café. 4. There isn't a museum opposite the library. 5. Cars can park in front of the library. 6. There's a shop above the café. 7. The street lights are above the hotel. 8. There's a man with a vegetable stall opposite the café. 9. You can see a stationary car in front of the garage. 10. The police man is behind the television shop.

Freagarcean: 1. ✓ 2. air beulaibh NOT air cùlaibh 3. ✓ 4. ✓ 5. chan fhaod NOT faodaidh 6. ✓ 7. Chan eil NOT tha 8. ✓ 9. ✓ 10. air beulaibh NOT